

DESTINATION FOUND

TRADITIONAL, CONTEMPORARY
AND GLOBAL INFLUENCES FUSE FOR
A DISTINCTIVE HAVEN IN NASHVILLE.

WRITTEN BY SHAWN GAUTHIER / PHOTOGRAPHY BY CAROLINE ALLISON



ARCHITECTURE / NICK DRYDEN,
DRYDEN ARCHITECTURE AND DESIGN
INTERIOR DESIGN / HANNAH CROWELL,
CROWELL + CO. INTERIORS
HOME BUILDER / WALT BRANDT,
HAMMOND & BRANDT BUILDERS, LLC
LANDSCAPE ARCHITECTURE / RICHIE JONES,
HDLA LANDSCAPE ARCHITECTS

Standing in her vacation home on Florida's Inlet Beach, surrounded by bright, spirited spaces and fun, bohemian decor, Tina Ehrig realized something: She wasn't ready to go home. "Then it hit me: We don't have to go without this beauty," she says. "Why not just create something equally as special in Nashville; a dream home we could experience every day?"

The light bulb moment ignited when Tina called up fellow Nashvillian and interior designer Hannah Crowell, who had furnished the family's vacation retreat on the Gulf Coast. Crowell mirrored her excitement and immediately set the project in motion. "After designing their beach house, I had a strong sense of their preferences and sensibilities," she notes. Since the family travels frequently, she also knew "they wanted a home that felt storied, worldly and one-of-a-kind."

Enlisting architect Nick Dryden to design it was the extra magic. Though the architect and interior designer had never partnered on a project before, they'd long admired each other's work. Both are considered visionaries in their community, creating unexpected spaces that are quietly pushing the envelope of Nashville's long-standing Southern design standards. "We both use our work to help our clients discover their own voices," the architect says. "Often, that's accomplished by hopscooting between traditional and contemporary influences while also taking a strong narrative approach."

Tina easily supplied the seeds of her home's narrative: "I wanted something timeless; a home that felt like it had been around for 100 years. But I also wanted modern with clean lines, elegant with worldly inspiration and lots of warmth." An avid entertainer, Tina also requested a fluid layout that would allow for an abundance of natural light. Stumbling upon an acre of available land at the end of a quiet street in Belle Meade was the godsend. "Material integrity and an overall sense of timelessness were paramount for fusing influences in a house uniquely tailored to its owners," Dryden says of his concept. "Pairing international attributes with clean lines, we were able to render a classical form with contemporary flair."

"THE OWNERS WANTED A HOME THAT FELT STORIED, WORLDLY AND ONE-OF-A-KIND."

—HANNAH CROWELL

Inside, the floor plan unfolds with intuitive momentum—the entry beguiles, leading effortlessly to the open main level's library, kitchen, dining and living rooms. The master suite is secluded with a private garden; upstairs, the children's bedrooms, playroom and Tina's office are considerably separated. "The floor plan is compact yet expansive in program, allowing for entertaining and intimacy at once," explains Dryden, who brought on general contractor Walt Brandt to execute an indoor-outdoor experience no matter where you are in the house. With Brandt's assistance, Dryden utilized balconies and terraces to create outdoor access from every interior space, bringing in plentiful fresh air and flooding the home with natural light.

While the house took shape, Crowell shopped. "The clients are well-traveled, so finding singular pieces from around the world was key," she says. Her bounty of wares paid off; a walk through the interior is akin to an international journey. Checkerboard floors inspired by a visit to a Roman church greet at the entry; hand-beaded Nigerian chairs lend whimsy in the living room. Danish modern furniture adds moments of warm, organic minimalism throughout the residence. And a trip to Morocco in the midst of the project produced armloads of colorful, eclectic rugs. "I love walking through the house and seeing pieces I found in deep corners of a medina in Fes or Tangier," Crowell says. "It fills the space with surprising, authentic moments."

Then there is the delicate millwork on the kitchen's pantry doors and a master headboard sculpted into a Mughal-esque silhouette—a means to honor Tina's Indian heritage. Meanwhile, a fountain outside the kitchen supplies a soothing soundtrack to family meals. "When I give a tour of our house, it takes 45 minutes," says Tina. "There's just so much to point out—everything has a purpose." Adding impact to intrigue is a massive floating wall positioned between the entry and living room, flanked by open slits that permit a constant stream of light.

For the grounds, landscape architect Richie Jones worked to enhance the home's clean geometry with strategic plantings of native grasses, lavender, rosemary, leggy hornbeams and boxwood hedges. Anchoring this plan are a saltwater pool and pergola—a bit of a nod to the family's nature-forward surroundings on the coast. While Jones positioned the pool and terrace to serve as a centerpiece for the entire landscape experience, the master-adjacent pergola was designed by Dryden as a folly of the main residence. Until Jones' plan for the landscaping matures, Dryden says, "it offers the adults a hiding spot in plain sight."

Although a Florida vacation home may have formerly been her dream escape, nowadays, "There's no place I'd rather be with my family," Tina reveals of the Nashville residence. "It's modern but classic—warm, inviting and tastefully done." A refuge, through and through. ■



In the entryway of this Nashville residence, RH's 19th C. Baroque Ravenna mirror sets a tone similar to that of the homeowners' Gulf Coast escape. Hanging above, a Neverending Glory pendant from Design Within Reach, designed by Plecháč & Wielgus, illuminates two scores: a Hollywood Regency bench from Florida Regency in West Palm Beach and an 18th-century Swedish trestle table from Judy Frankel Antiques in Troy, Michigan.

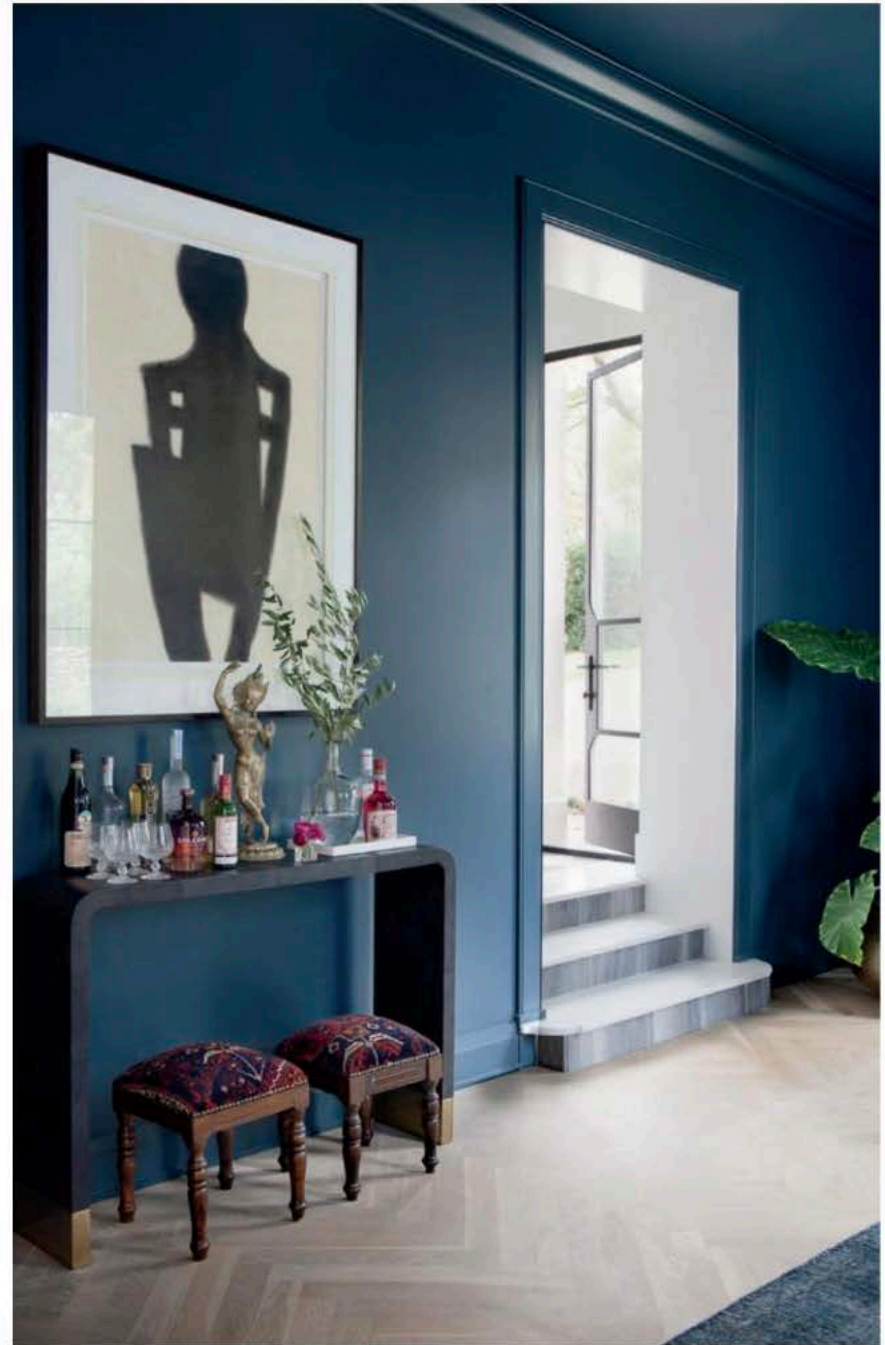


A custom marble coffee table by Nashville Tile + Interiors acts as a visual anchor in the living room. Vintage armchairs from Atlanta's Westside Modern offer sleek, organic complements to a Cisco Brothers sectional covered in organic cotton. A Moroccan leather pouf expands the seating options within scale; meanwhile, beaded African armchairs from 1stidibs, upholstered in an embroidered Otomi textile, add an exotic effect.



Above: Waterfall-edge Calacatta Bettoqli marble countertops by Nashville Tile + Interiors frame Stovall Custom Woodworking cabinetry to form the kitchen island. A Newport Brass faucet and water dispenser from Kenny and Company offer hints of metallic glamour. Muuto Nerd counter stools from A+R Store in Los Angeles add functional notes, the Jason Miller Endless fixture is by Roli & Hill.

Opposite: Interior designer Hannah Crowell credits homeowner Tina Ehrig for choosing the kitchen's Italian-made ILVE range from A-1 Appliance. Above, a vent hood insert from Ferguson is wrapped in drywall to disappear into its environment. Anthropologie's Danehill dining table, surrounded by Normann Copenhagen Knot chairs from Finnish Design Shop, establishes seating with a view.



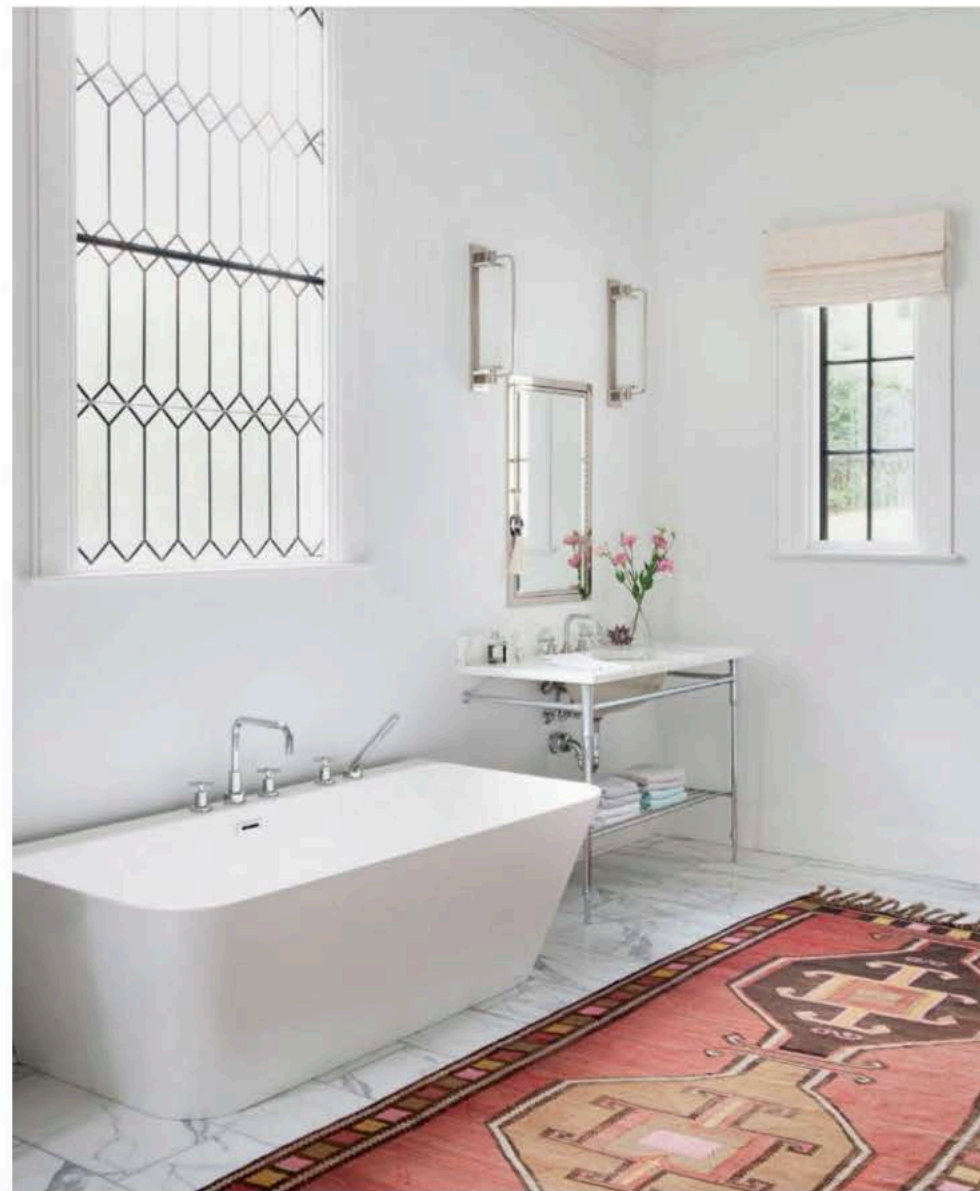
Left: In the library, antique Oashgar rug stools provide a playful pairing to CB2's Tyler leather console table. The abstract artwork was a gift from Tina's father; Crowell found the brass dancing Shiva figurine at a local flea market. Farrow & Ball's Hague Blue bathes the space in rich moodiness, complementing intricate woodwork details by Cox Interior.

Opposite: The dining room's Crystorama Clover chandelier from Hermitage sets a glow over a Nickey Kehoe farm table, its traditional form contrasted by the modern Michael Thonet-designed Era armchairs from Design Within Reach. Walls painted with Farrow & Ball's Inchyra Blue complement draperies made with Tulu Textiles' Alvin Teal fabric.



Opposite: A vintage rug from Nashville Rug Gallery sets the tone for the master suite. Ro Sham Beaux's Frankie Malibu chandelier converses with throw pillows made with mud cloth from Gamafro Originals. An oak spindle bench by Ethnicraft grounds the graceful silhouette of John Robshaw's Bihar bed, Ralph Lauren's '67 Boom Arm wall lamp for Circa Lighting lends a glow.

Below: Calacatta Gold marble floors from Stone Source enrich the master bathroom with texture. Here, Crosswater London's Patinato Grande bathtub offers an indulgent retreat beneath custom mullioned windows by Peres Studios. The space's fresh aesthetic provided the perfect backdrop for a vintage rug.





Above: Inspired by the family's beach house and built by Frame to Finish, the pergola provides a private destination adjacent to the pool terrace. The Millis Patio sofa from AllModern, dressed in Electra Eggleston's Miami Peacock outdoor fabric, connects to toss pillows in the same textile accenting crisp white Acapulco chairs by Mexa. Arteriors' Rimini pendant brings warmth to the outdoor escape.

Opposite: The home's cedar shake roof by Above All Roofing, cream stucco exterior by R.T.B. Construction and custom casement windows by Kolbe Windows & Doors combine to create its original style. Accented with Country Floors' Metta Silk glass mosaic tiles, a saltwater pool featuring an integrated spa from Madison Swimming Pools became a centerpiece for the landscape experience.